

WOLFCOM®



Law Enforcement and Military Sales

Phone: (626) 794 9000

www.WolfcomUSA.com



Honor – Courage – Integrity
Above All Else

Sole Source for U.S.

Department of Defense

Contract # FA864919PA034



- 19 Years in Business
- 1,500 US Agencies
- 35 Countries

Wolfcom Enterprises
Pasadena, California
United States of America

www.WolfcomUSA.com



Our Body Cameras are CCI Certified. “CJIS Certificate of Integration”

Each WOLFCOM Camera has been assigned a CCI Number by CJIS Database Intelligent Design Solutions.

What is a CCI number?

A CCI number (CJIS Certificate of Integration) is issued to companies whose body cameras and In-Car video systems Integrate seamlessly to CJIS Compliant Evidence Management Software and have been screened to be free of Malware and Viruses.

- | | |
|-----------------------------------|---------------|
| • Vision Body Camera | CCI #W0230182 |
| • Halo Body Camera | CCI #I0219192 |
| • 3 rd Eye Body Camera | CCI #W0230181 |
| • Mini-DVR In-Car | CCI #W0401197 |
| • Commander Body Camera | CCI #W0911184 |

You can check our CCI Status at www.PoliceBodyCameras.com



The **Commander by WOLFCOM®** is a Smart Android Body Camera System designed specifically for Law Enforcement & Military. The Commander takes body camera technology to the next level by offering IOT connectivity through 4G/LTE, WiFi, Bluetooth, NFC, and GPS providing multiple options, such as direct to Cloud Storage, SOS Emergency Connect, Activation Triggers, Wireless Uploads, GPS Real-time Location Tracking, 2-way video communication via Remote View, Live Streaming and POC PTT (Push To Talk) communications by 4G/LTE Cellular. Later add-ons will include Facial Recognition power by Artificial Intelligence.

The Commander features built-in Night Vision Infrared LEDs that can be set to activate automatically when entering a dark area. With a 140-degree fixed-focus wide-angle lens, officers will be able to capture every detail. For maximum comfort, fit, and wearability, the mounting clip can rotate a full 360 degrees. Magnetic mounts are also available.

With a waterproof rating of IP68, the unit will remain operational even when submerged in water. An LCD display provides instant playback of recorded video as well as menu options for additional features.

The GPS location of each WOLFCOM® Commander Body camera can be tracked in real time on a map. Using our Remote View Software, one camera, or a fleet of cameras, can be monitored at any time. Watch live video footage of any Commander camera when your officers are out in the field. With our SOS Live Stream connect feature, Officers can relay live video footage including their GPS location to the station in the event of an emergency.

[Watch Presentation Video](#)



Commander
[Watch Presentation Video](#)



Smart Docking Station



Single Docking Port



**Epaulette
Clip**



**Replacement
Battery**



Magnetic Mount



Car Mount



**Covert
External Camera**



Covert Earpiece

The Commander is part of WOLFCOM's Complete Eco System

WOLFCOM®



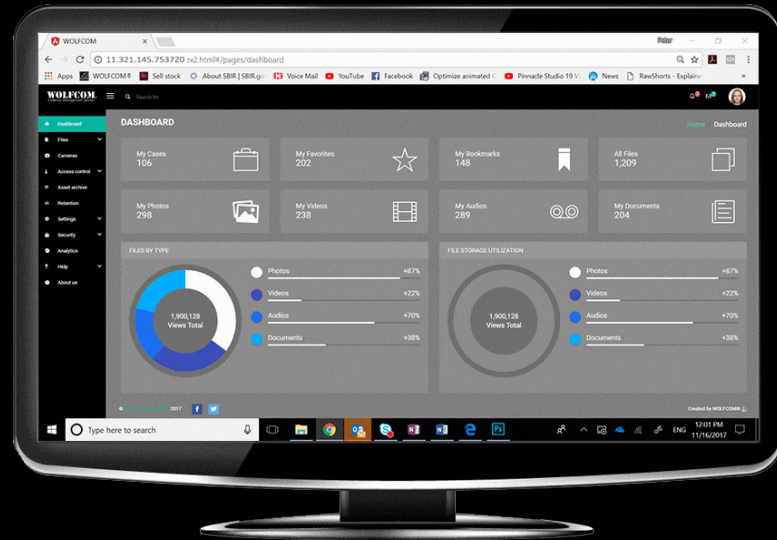
Commander



WOLFCOM ECO System

At the Center of WOLFCOM's Eco System is WEMS
WEMS is the heart that connects everything together

WOLFCOM®



WEMS

WOLFCOM Evidence Management System

[Watch Presentation Video](#)



WOLFCOM ECO System

How our System Works.

Everything is Secure and Automatic

WOLFCOM®



Commander

Officers Use our Body Cameras to Record throughout their day.



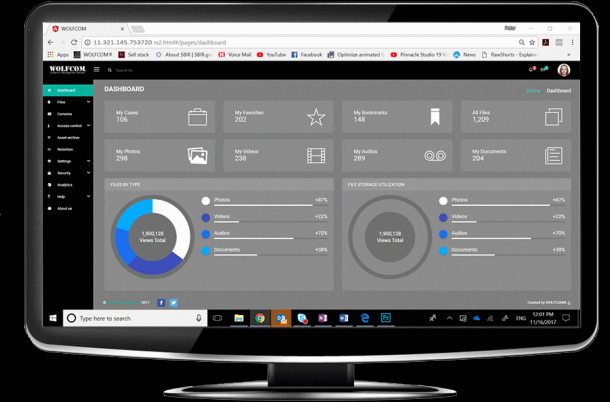
MDT Software

From within their Vehicles, Officers can connect our body cameras to their MDT to Playback and Review Recorded files. They can Tag & Classify each Video and enter notations.



Docking Station

At the end of their shift, Officers place the cameras into the docking station. Files are then automatically uploaded Into WEMS. A status bar displays the upload status of each camera. When Transfer is complete, the files on the camera are deleted and the docking station proceeds to charge the cameras for the next days' use.

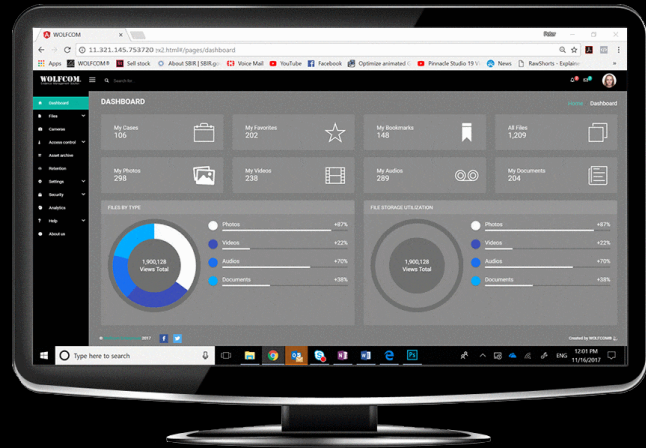


WEMS

All files are uploaded into the officer's evidence folders and are then Encrypted using Sha-256 IACP Standards.

You can choose to store your files in the Cloud or On-Premises.

After files from the cameras are uploaded and managed through WEMS, they are then stored in either the Cloud or an On-Premises Server.



Cloud Storage



On-Prem Storage

Advantages of Cloud Storage

- Headache free. No need for IT staff
- We'll take care of everything
- Access WEMS from anywhere in the world
- Easily Share Files with District Attorney
- All files are automatically backed up
- Access WEMS on Your Smart Phone
- Upload Files from your Phone
- Pool your storage together
- No Overages

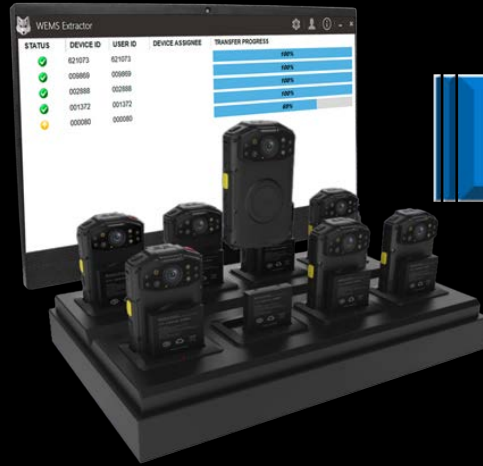


Advantages of On-Premises Storage

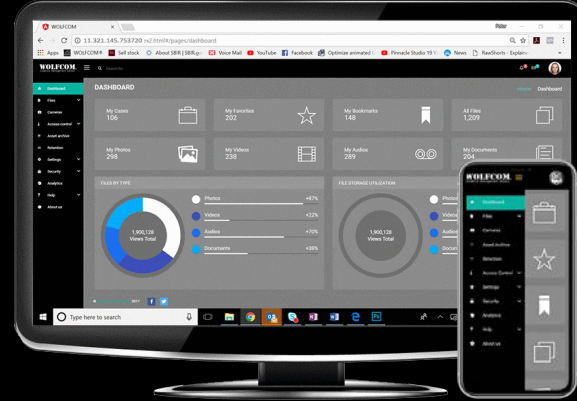
- You own the system
- No Monthly Storage Fees
- Immediate Access to your files.
- Access WEMS from any PC on your network
- Easily Share Files with Anyone on your VPN
- Free Updates & Maintenance
- Free Technical Support



Commander



Docking Station



WEMS



Cloud Storage

With our Cloud Storage, we let your officers pool their storage together. Plus, you never pay Overages. We alert you when you've reached 85% of your storage allotment allowing you to fine tune your Retention Policies.



Easily Share Files with the District Attorney



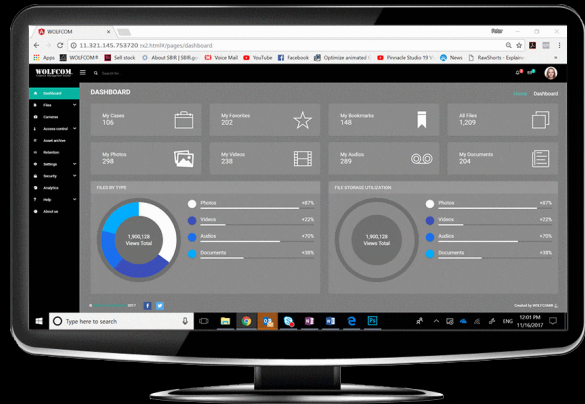
On-Premises Storage Lets You Keep Everything Under One Roof



WOLFCOM Cameras



Docking Station



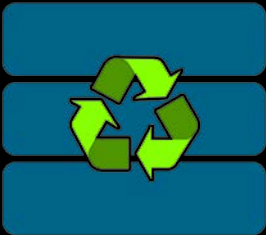
WEMS



On-Premise Storage



Backup Storage Page 10

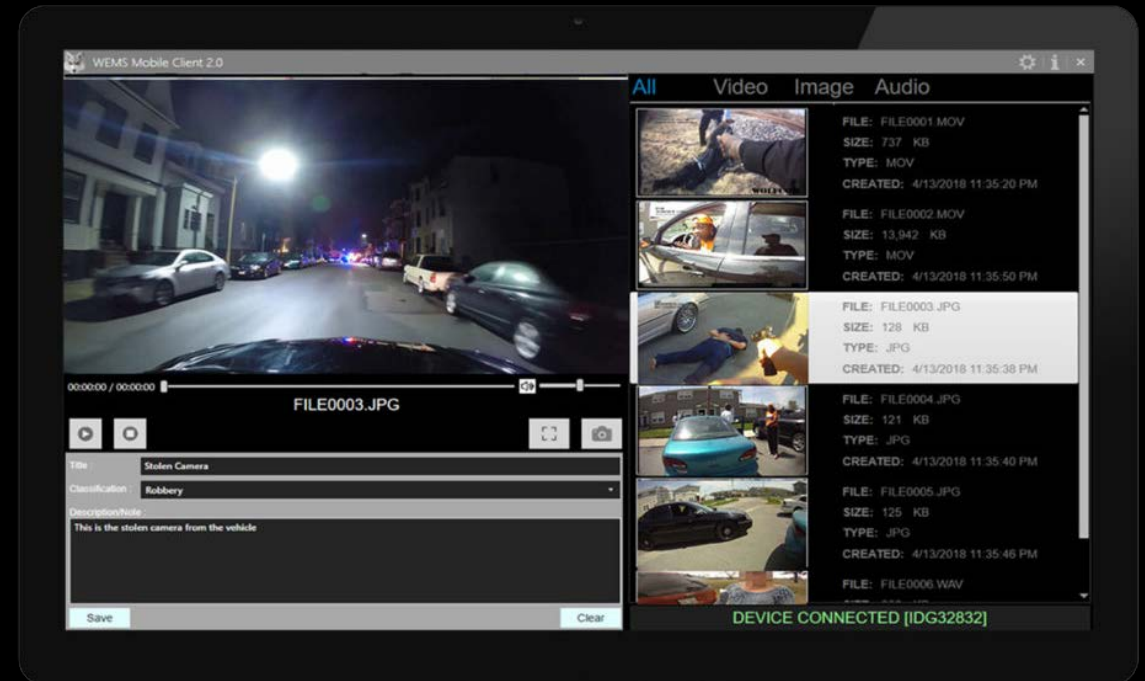


Backup & Recovery Service

You have Complete Control & Ownership of an Entire System.
We'll Provide Training, Updates and Maintenance for WEMS



With our Mobile Client Software, your officers can tag, classify, and notate videos from the WOLFCOM body camera directly on the field. Saves time and saves money.



Our Mobile Client Application installs on your mobile data terminal. Police Officers can use the mobile app to tag video, classify, and write notations onto the body camera files. At the end of an officer's shift, when uploading data from WOLFCOM body cameras and In-Car cameras, all metadata will sync within the (WEMS) WOLFCOM Evidence Management Software.



The **WOLFCOM Evidence Management System** is a robust and flexible digital evidence management solution that can manage your video assets, photos, audio files, and documents. A user, with proper rights and privileges, will be able to tag, view, verify integrity of the asset, generate an audit trail report, and automatically purge the files based on the department's retention policies.

Have just one system to manage all your digital evidence.

The WOLFCOM Evidence Management Solution is designed to manage all your department's digital evidence from body camera videos, digital pictures, in-car videos, surveillance camera videos, documents, audio recordings and other standard media files. This allows officers the ability to quickly find and view digital evidence. WOLFCOM knows that no two agencies are exactly alike. Our approach is to identify your unique challenges and develop a solution that addresses and solves problems for your department.

Universal Dashboard

Having a simple Widget Application Dashboard makes use of the software easy and familiar. Because it is a recognizable platform, there will be no learning curve for Admins and Users.

Video Redaction Feature

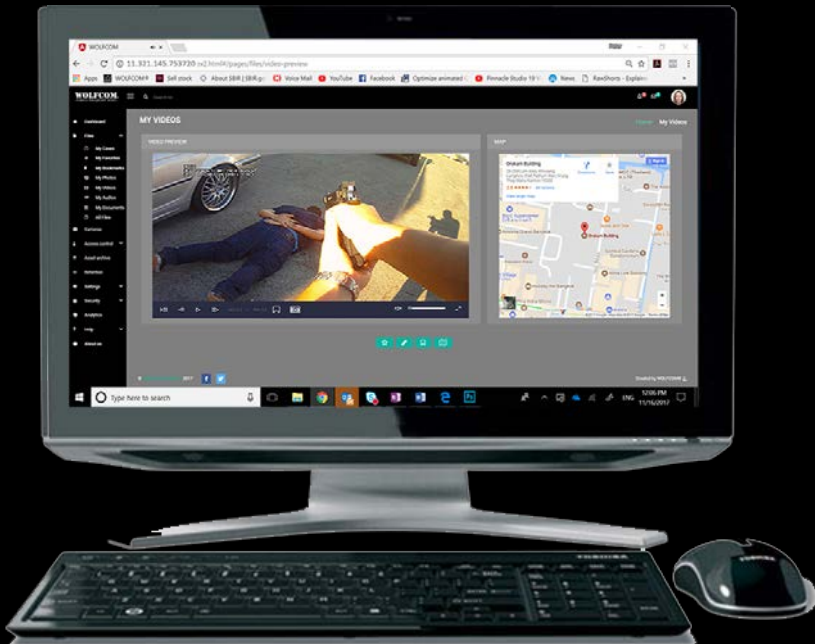
Blur faces and license plates with ease. Basic redaction is included free in every WEMS license. Redaction is done within the WEMS interface and is very simple to use. Or you can let our Artificial Intelligence redact your videos for you. Our Smart Redaction software is subscription based and will automatically detect faces and bodies. Audio Redaction is also available with Smart Redaction.

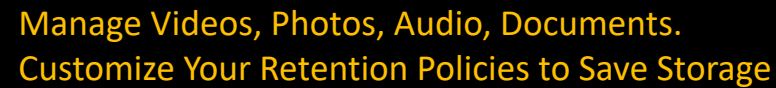
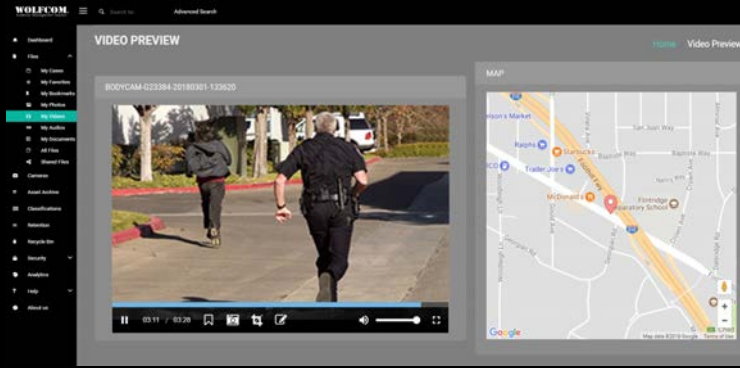
Finding a file is quick and easy

The intuitive user interface is officer-friendly and simple to use. Thumbnail file preview allows you to see thumbnails of picture or preview a video to make sure you have the correct file. Having all your information easily accessible in one place allows officers to spend more time fighting crime and less time wrestling with digital files. All metadata from a file is searchable by date, times, location, camera, officer, case numbers and much more. Evidence can be viewed from any department computer on the network.

Evidence is organized by Case Number

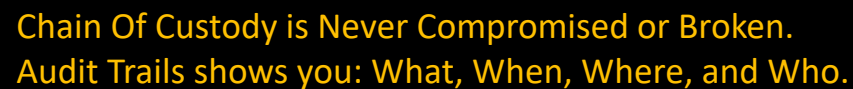
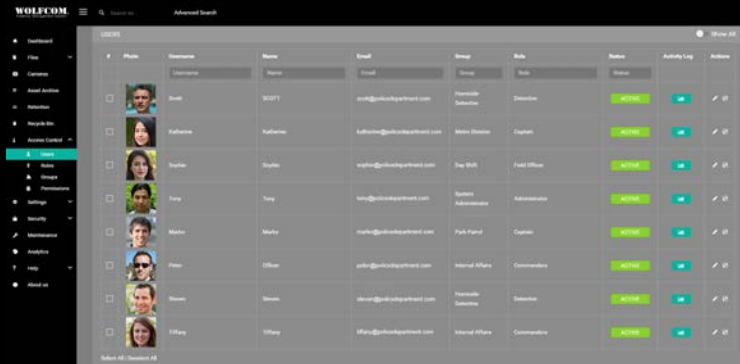
Law Enforcement activities are categorized by a Case Number or similar identifier; this allows the officers to organize all digital evidence that relates to each other by assigning it to a specific Case Number. So, when they pull up a case, they can view all the digital evidence affiliated with that case.



WOLFCOM®

Playback, Edit, Crop, Redact Video, Snapshot.
View GPS Location During Video Playback.

**Create and Share Case Files with Other Officers.
Easily Share Files with Anyone.**



Customize User's Rights and Permissions.
Create Groups and Roles with Assigned Privileges.

Analytics Gives You a Complete Understanding of Everything within the System.



- 🏠 Консоль
- 📁 Файлы
- 📷 Камеры
- 🗂️ Архив материалов
- 🔒 Сохранность
- ⚙️ Настройки
- 🔒 Безопасность
- 🔧 Обслуживание
- 📊 Аналитика
- ❓ Помощь
- 📶 Downloads
- 👤 О нас

КОНСОЛЬ ?

[Домой](#) / Консоль

Мои папки
1



Мое Избранное
2



Мои закладки
1



Все файлы
3,439



Мои фото
3



Мои видео
273



Мои аудиозаписи
0



Мои документы
0



ФАЙЛЫ ПО ТИПУ

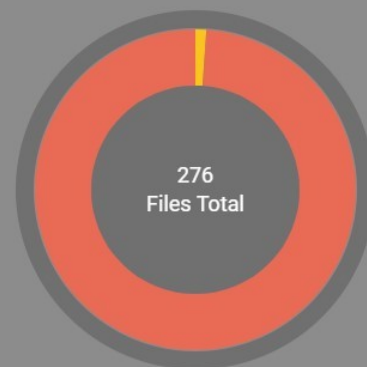


Фото	1.09%
Видео	98.91%
Аудио	0.00%
Документы	0.00%

ИСПОЛЬЗОВАНИЕ ХРАНИЛИЩА

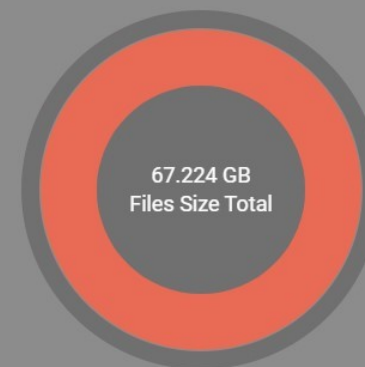


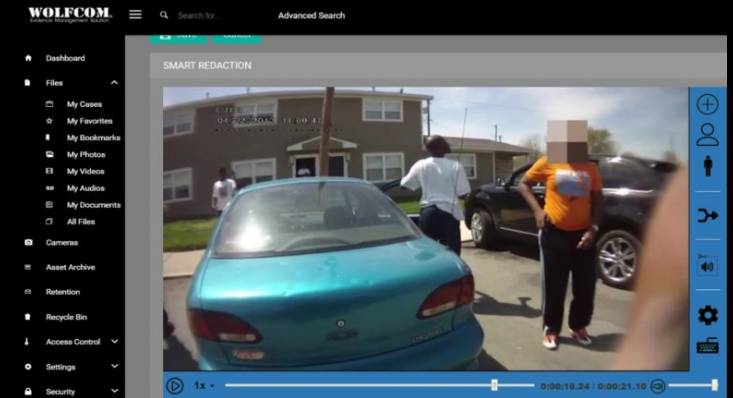
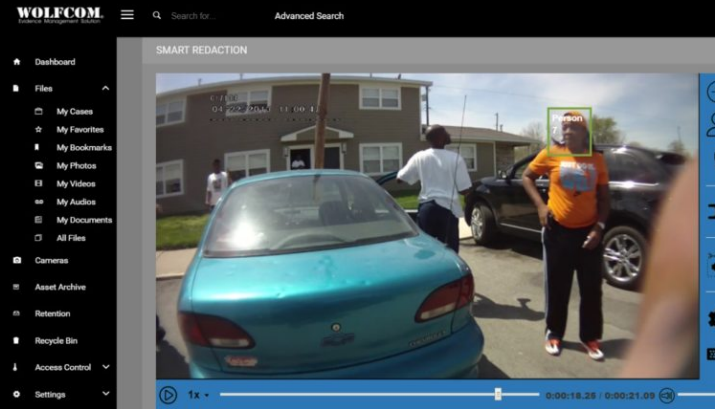
Фото	0.011%
Документы	0.000%
Аудио	0.000%
Видео	99.989%

ASR (Automatic Smart Redaction) Video and Audio Redaction Powered by AI (Artificial Intelligence)

WOLFCOM®

WEMS also comes with (optional) Automatic Smart Video Redaction. ASR can identify and redact faces automatically.

Powered by Artificial Intelligence, ASR automatically detects all faces in the video and, with the click of a button, blurs all of them out in a matter of seconds. Easily redact license plates, private information, objects, and audio.



[Watch Demonstration Video](#)

ASR is Available in 4 Solutions Below



Stand Alone ASR WorkStation



WEMS On-Premises Storage Solution



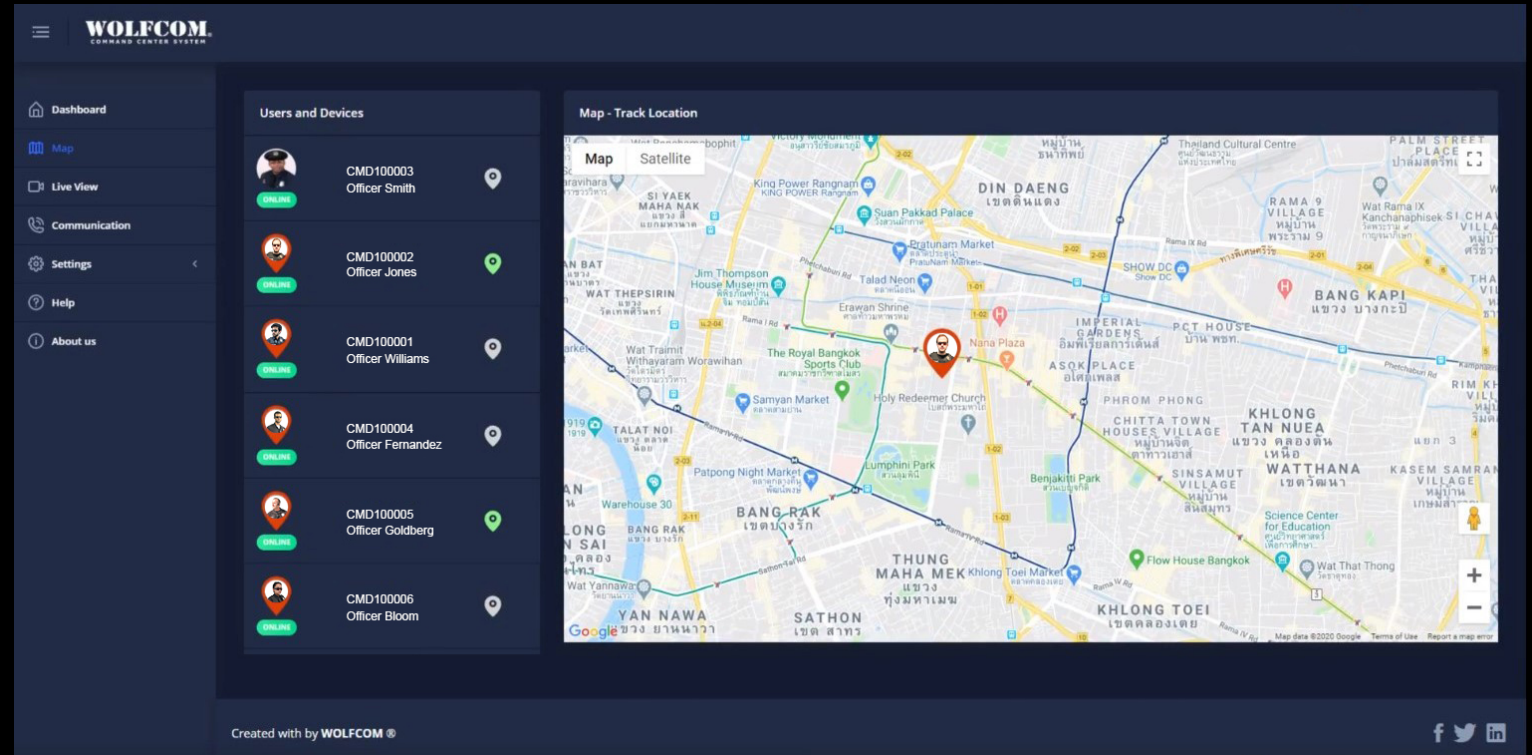
At www.WolfcomCloud.com



Install on Your Own Computer



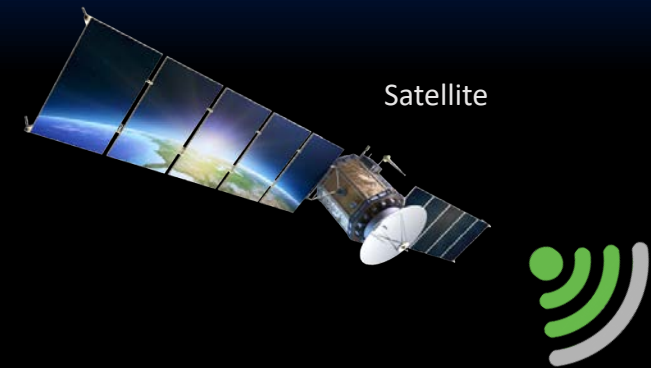
4G/LTE



- See Live Video and GPS Coordinates of every Officer.
- PTT (Push To Talk) Voice communication between body cameras.
- Send SMS Text Message from camera to camera.
- Emergency SOS Alert to Dispatch with GPS and Video.

Real-Time Video View with GPS Location Tracking

WOLFCOM®



Satellite



WOLFCOM Command Center See's Everything



Cell Tower



Rear Facing Camera



NVR System

Body Camera



Front Facing Camera



Interior Camera



Wi-Fi 4G/LTE GPS



LCD Screen





Commander Online Platform

The GPS location of each WOLFCOM® Commander Body camera can be tracked in real time on a map. Using our Commander Remote View Software, one camera or a fleet of cameras can be detected at any time. Watch live video footage of any Commander camera when your officers are out in the field. With our SOS Live Stream connect feature, Officers can relay live video footage including their GPS location to the station in the event of an emergency.



Dispatch License

Each Dispatcher will need a license to log-in to the Commander Platform and monitor and communicate with each officer that is wearing a Commander body camera



Terminal Fee (Device Fee) License

Terminal Fee, also known as Device Fee is charged for each Commander Camera system. The license allows the camera to connect to the Commander Platform

4G/LTE Frequency	GSM\CDMA\CDMA2000\WCDMA\FDD-LTE\TDD-LTE\GSM:850/900/1800/1900 WCDMA:850/900/1900/2100 EVDO:800 TDD-LTE:B34/B38/B39/B40/B41 FDD-LTE:B1/B2/B3/B4/B5/B7/B8/B17/B20/B28AB
Memory	32GB. Optional 64GB & 128GB available
Interface	Standard earphone port, Mini USB, SIM card slot
Size	Approximately 103x65x18mm
Weight	180g / 6 Ounces
View Angle	140 degrees
Waterproof Rating	IP68
Screen Size	3.1 Inches
Recording time	Up to 20 hours depending on resolution and settings
Video resolution	1920×1080, 1280×720,640×480, 480×320

Video format	MP4
Picture Pixel	True Pixel 2560×1950、3264×2448、4736×3552,6528*4896
Picture format	JPEG
Touch screen	YES
Time synchronization	YES
Flashlight / Torch	YES
Night Vision IR	Up to 3 or 4 meters
WIFI	YES
NFC	YES
GPS	YES
Bluetooth	YES
PTT	YES
APP Application	Optional

Excellent Support is what holds WOLFCOM's Complete Eco System together

WOLFCOM®



FREE Technical Support is Included with our Solution

Highly trained and qualified technical support & customer care agents are by far the most valuable investment you can ever make.

Each client receives a personalized Support Team consisting of an Account Manager, Relationship Manager, and IT Specialist.

Training is always free and can be accomplished over the phone or Remotely over the Internet .



WOLFCOM ECO System

WOLFCOM

Law Enforcement and Military Sales

HONOR COURAGE INTEGRITY
ABOVE ALL ELSE

WOLFCOM



Honor – Courage – Integrity
Above All Else

**Sole Source for U.S.
Department of Defense**

Contract # FA864919PA034



- 19 Years in Business
- 1,500 US Agencies
- 35 Countries

Wolfcom Enterprises
Pasadena, California
United States of America
1-626-794-9000

www.WolfcomUSA.com